

State Reporting



The Ins and Outs of State Reporting for Special Education

April 2023

©2021 Frontline Education Confidential & Proprietary

June 8, 2023

Agenda

-
- 01 Various State Reports (and Schedule)
 - 02 Origin of the Data
 - 03 Overview of the Process
 - 04 Specific Data Reports
 - 05 Frontline IEP Data Sources
 - 06 Troubleshooting
 - 07 Resources
 - 08 Q and A



The World of Special Education Data





Who are the Key Players

- District Director of Special Education
- District Special Education Support Staff
- District CIO (Chief Information Officer)
- RIC Support Staff
- RIC Data Warehouse Team
- State Education Department – Special Education PD System
- State Education Department – SEDCAR
- State Education Department – Student Information Repository System (SIRS)
- Federal Office of Special Education



Various State Reports

- October Snapshot
- Year End Snapshot
- Programs Fact Extract (aka Disability Extract)
 - (Disability, Alternate Assessment, 504 and Safety Net)
- Events (Timely Evaluations – CSE, CPSE and Parentally Placed) – SSP Indicators 11 & 12
- Assessment Extract (Preschool Outcomes Summary) – SSP Indicator #7
- PD-8 – Suspension Data
- FTE-State Aid Report
- Other (no data extracts from Frontline IEP)
 - PD-6 (Personnel Data)
 - SSP Indicator 8 (Parent Survey)
 - SSP Indicators 13 & 14 (Post Secondary Information)



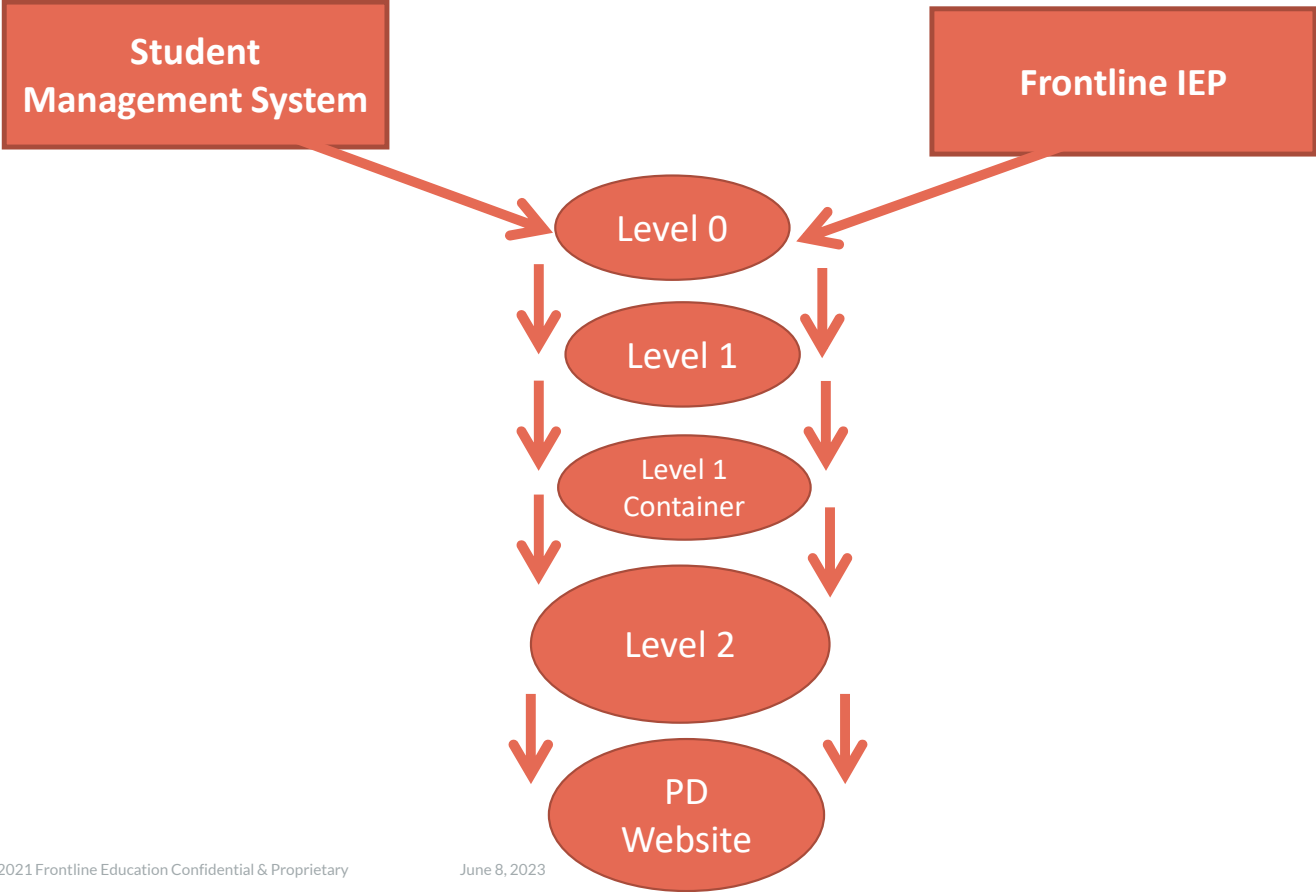
Schedule

- Annually
 - October Snapshot
 - Year End Snapshot
 - Programs Fact Extract (aka Disability Extract)
 - (Disability, Alternate Assessment, 504 and Safety Net)
 - **NOTE:** *Disability extract is run more often depending on district practice*
 - Timely Evaluations (Parentally Placed) – SSP Indicator 11
 - PD-8 – Suspension Data
 - FTE-State Aid Report
- State Performance Plan Schedule (SSP Indicators 7, 11, 12)
 - Events (Timely Evaluations – CSE (11), CPSE, (11), Early Intervention to CPSE (12)
 - Assessment Extract (Preschool Outcomes Summary) (7)



Student Information Repository System (SIRS)

How data flows through Data Warehouse



WHERE DOES THE DATA COME FROM?

STUDENT MANAGEMENT SYSTEM
(SMS)

FRONTLINE IEP

(not all the errors belong to Special Ed)



Student Management System

DEMOGRAPHIC and ENROLLMENT

All School-Age Students

All Pre-School Students

All Students Parentally Placed in District
(DOL)



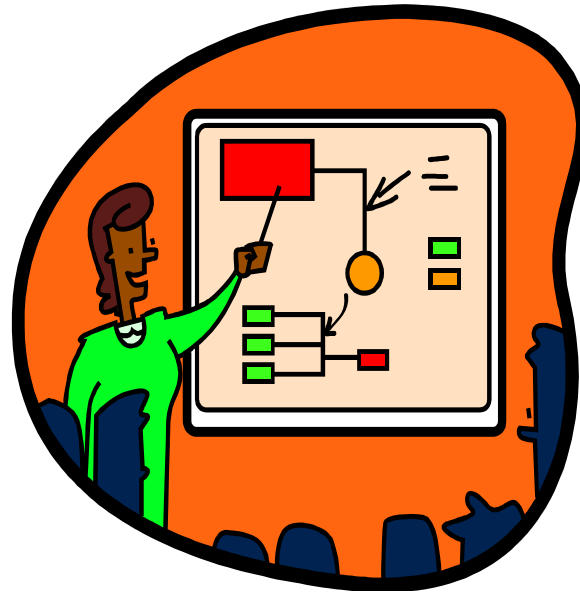
Frontline IEP

Extract data from Frontline IEP

Programs Fact Extract
*(Disability, Alternate Assessment,
504 and Safety Net)*
October Snapshot Extract
End of Year Snapshot Extract
Assessment Fact Extract
Events Extract



THE PROCESS



Frontline IEP

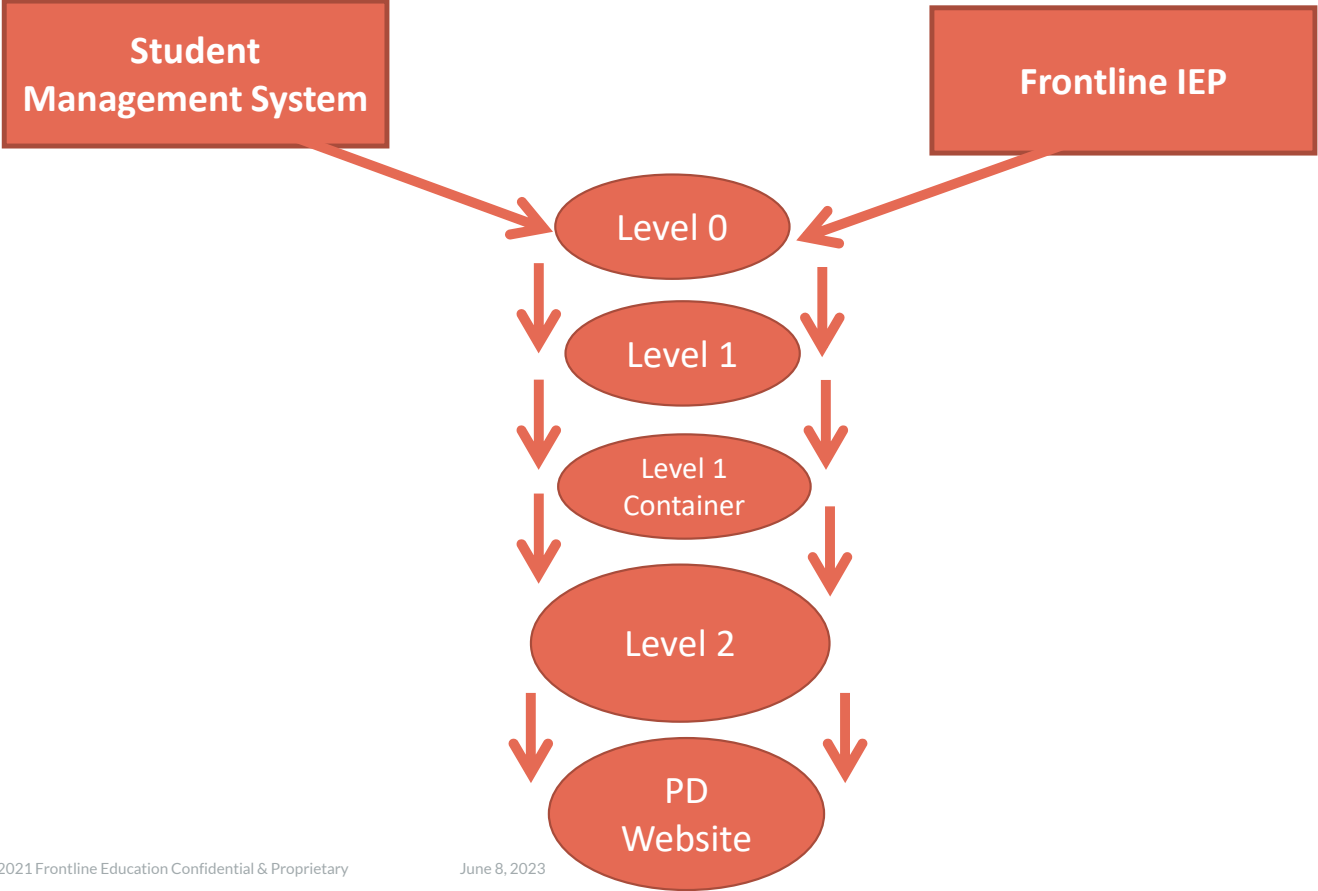
Run and Review Reports and Correct

- *Exception* Report - appears on the report EXCEPT there is a problem
- *Exclusion* Report - does not appear on the report – EXCLUDED
- *Inclusion* Report - summary of all INCLUDED on the report



Student Information Repository System (SIRS)

How data flows through Data Warehouse



CLEAN UP in LEVEL 0

- District Data Administrators, Special Ed office work together to correct errors
- Correct in Frontline IEP(not just Level 0)
- Districts use the RIC and SMS support staff to resolve errors/issues at Level 0
(Not all errors belong to Special Ed)



District
DATA ADMINISTRATOR

Lock & Load Level 0
Program Services
Assessments
Special Ed Snapshots
Special Ed Events



SPECIAL EDUCATION
ADMINISTRATORS

pd.nysed.gov

Verification



Special Education Snapshot Data



VR 1 Preschool Child Count Report by Race/Ethnicity

VR 2 School Age Child Count by Age and Disability

VR 3 School Age Students by Disability and Race/Ethnicity

VR 4 Preschool LRE Setting Report

VR 5 School Age LRE Setting Report

VR 6 District Report of Preschool Students by Primary Service Provider

VR 7 Provider Report of Preschool Students

VR 8 District Report of School Age Students by Building Where Enrolled

VR 9 Provider District Report of School Age Students



Frontline IEP

Compare, Review and Validate

- *Letters/Reports in Frontline IEP*
 - *Review Inclusion Report – summary of all INCLUDED on the report*
- *Maintenance in Frontline IEP > SIRS Extracts*
 - *Data Verification Extracts*
 - *One for each Data Verification File (Fall Snapshot, Year-End Snapshot, Events, Indicator 7, Type of Disability, Current Primary Placement)*
 - *Contains all fields in Frontline IEP – COMPARE*
 - *– which one is Frontline IEP error and which one is SMS error*
 - *Correct where needed (not just in Level 0)*



Special Ed Administrators

Verification Process

- Compare VR Reports with Frontline IEP Inclusion Reports, Listings, and Data Verification Extracts
- Submit changes to Data Administrator
- Re-Review PD System
- Re-Re-Review PD System



SPECIAL ED ADMINISTRATORS



pd.nysed.gov

Certification



Resources

- Frontline Learning Center
- Frontline Support
- Data Verification and Certification: [pd.nysed.gov: Certification and Due Dates At-A-Glance for the 2022-2023 School Year : SEDCAR : IRS : P-12: NYSED](https://pd.nysed.gov/Certification-and-Due-Dates-At-A-Glance-for-the-2022-2023-School-Year-SEDCAR-IRS-P-12-NYSED)
- State Performance Plan Schedule: www.p12.nysed.gov/sedcare/sppschedule2017-2023.html
- SIRS Manual: www.p12.nysed.gov/irs/sirs/documents/2022-23SIRSMannual18-0.pdf
- New York State RICs (Regional Information Centers)





Thank You



frontline
education™